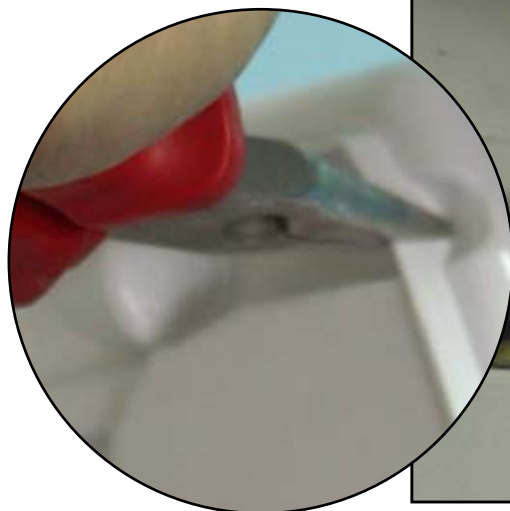


## Step 1



## Step 2

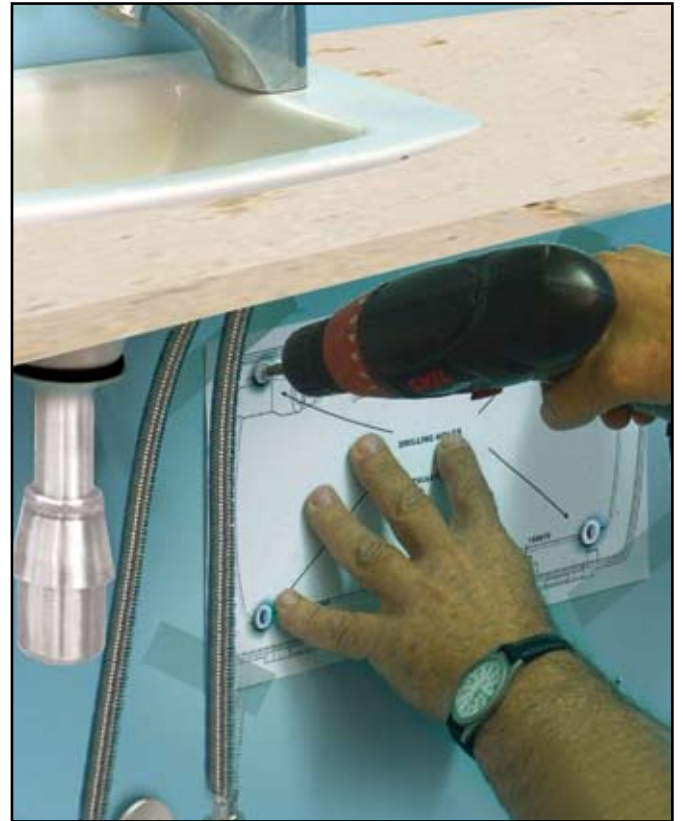
Open the entrance cable in the back of the unit.  
Be sure to open the side of the cable



## Step 3

Find the optimal place and stick the drilling hole template to the wall.

Drill 4 holes and insert Plugs.



## Step 4

Hang the unit on the wall by 4 screws.

Don't forget to inset the electric cable before.



## Step 5

Connect the Cold water hose to the inlet on the left side of the unit. (Don't forget to insert rubbers).

Be sure to use reinforced hose.  
Be sure to close it well.



## Step 6

Connect the Hot water hose to the outlet. (don't forget the rubbers).

Be sure to use reinforced hose.  
Be sure to close it well.

Open the water supply and check for leakage.

If there is no leakage - Go on

If there is leakage, Find the leakage point and fixe it.

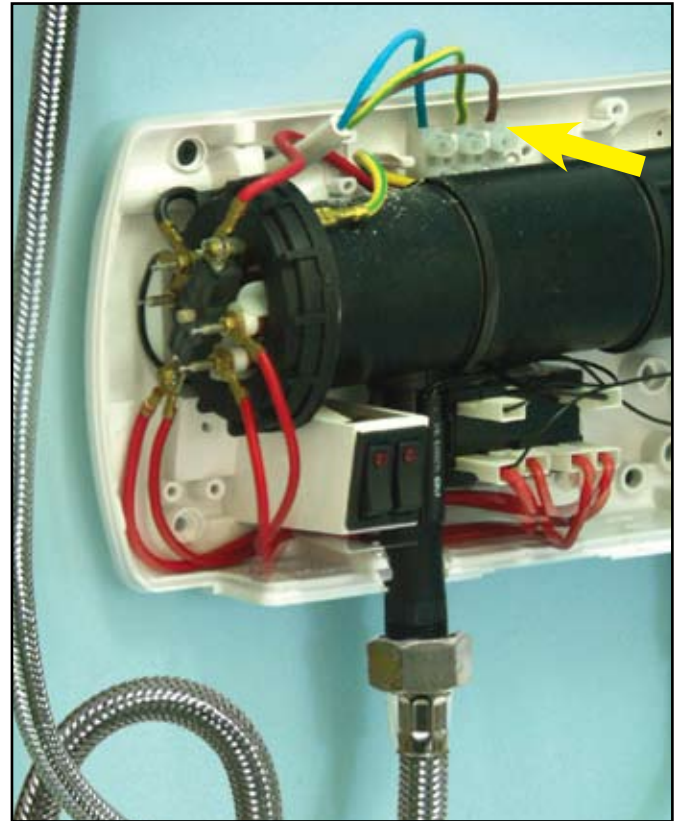
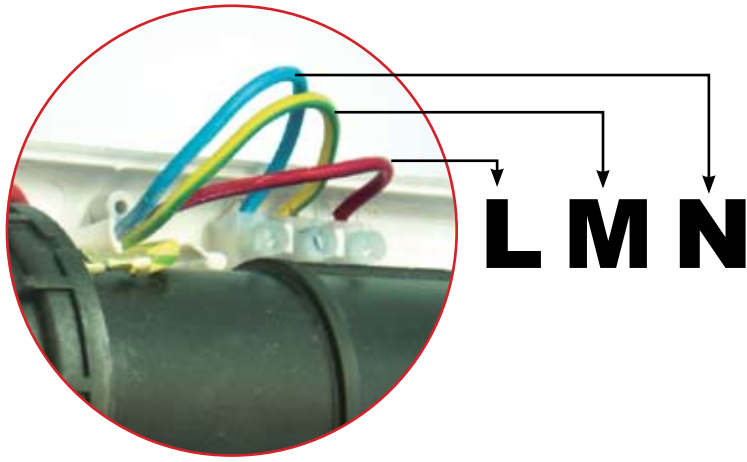
Check again

Don't continue unless you sure there is no leakage.



## Step 7

Connect the electric cable to the Terminal block.



## Step 8

Put the cover of the unit.  
Close the cover by 4 short screws





## Step 09

Insert the Gray Bottom cover



## Step 10

Final view

InLine 3.5kW  
InLine 5.0kW



# Step 10

Final view

InLine 7.0kW

